



[www.vstarcam.com](http://www.vstarcam.com)

深圳市威视达康科技有限公司

Shenzhen VStarcam Technology Co.,Ltd.

---

# Manual For IP-Camera Super Client (PnP)

## Table of contents

### **LESSON 1: Introduction**

- 1.1 Introduction of Ip-Camera Super Client

### **LESSON 2: Installation**

- 2.1 The procedure of installation
- 2.2 Setting path to save recordings
- 2.3 To make the IP-Camera Super Client autorun

### **LESSON 3: Introduction of main interface**

- 3.1 The Origin interface
- 3.2 The main menus

### **LESSON 4: Instruction Guide**

- 4.1 Add a new Camera
- 4.2 Record video
  - 4.2.1 Setting recording video
  - 4.2.2 Check video
- 4.3 Alarming settings
  - 4.3.1 Motion detection settings
  - 4.3.2 Check alarming records
- 4.4 WIFI settings

### **LESSON 5: FAQ**

# LESSON 1:Introduction

## 1.1 Introduction of IP-Camera Super Client

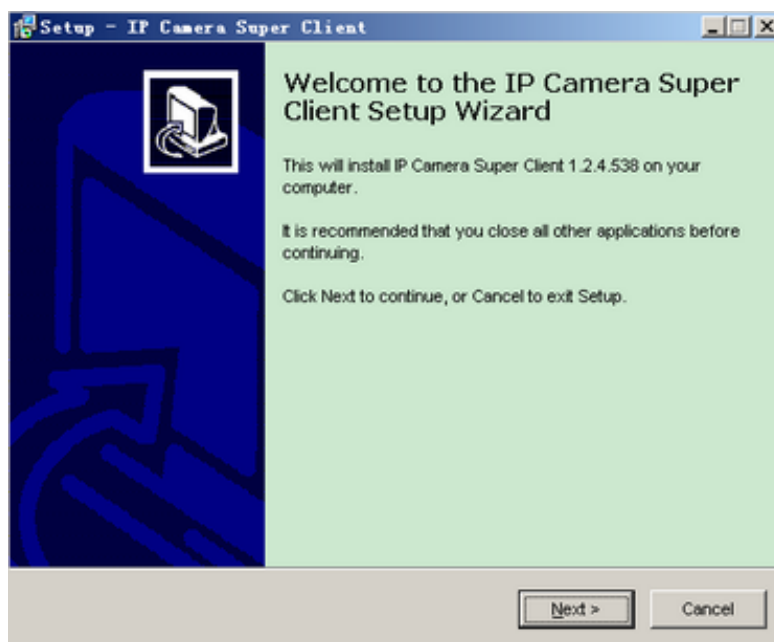
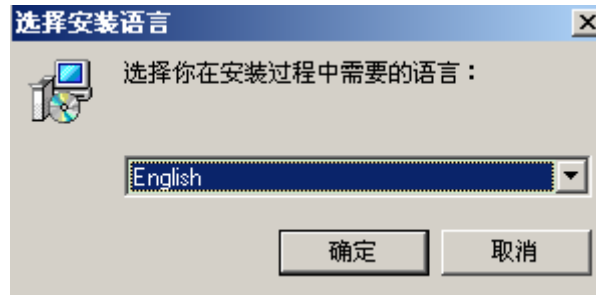
IP-Camera Super Client is a kind of software used for multiple camera monitoring, characterized with multi-camera monitoring, PTZ control, record, alarm and access authority management function, as well as easy operation and strong capability.

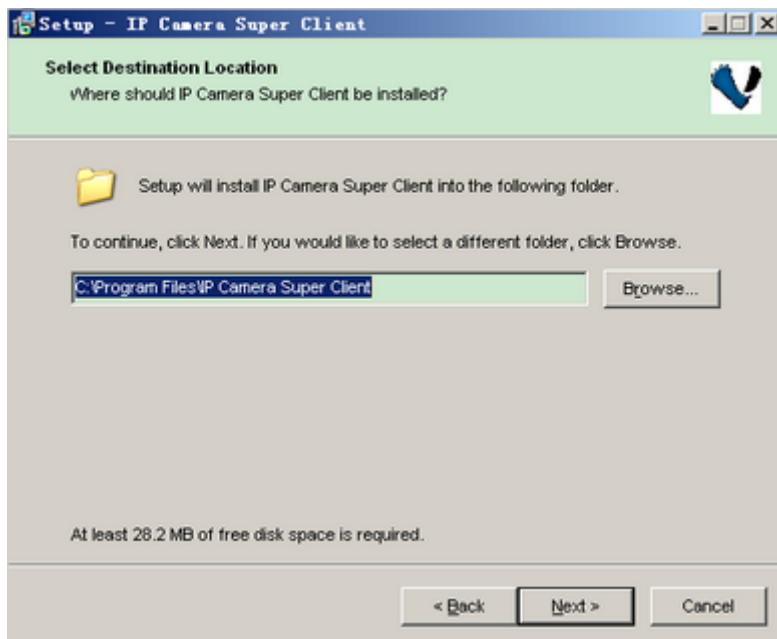
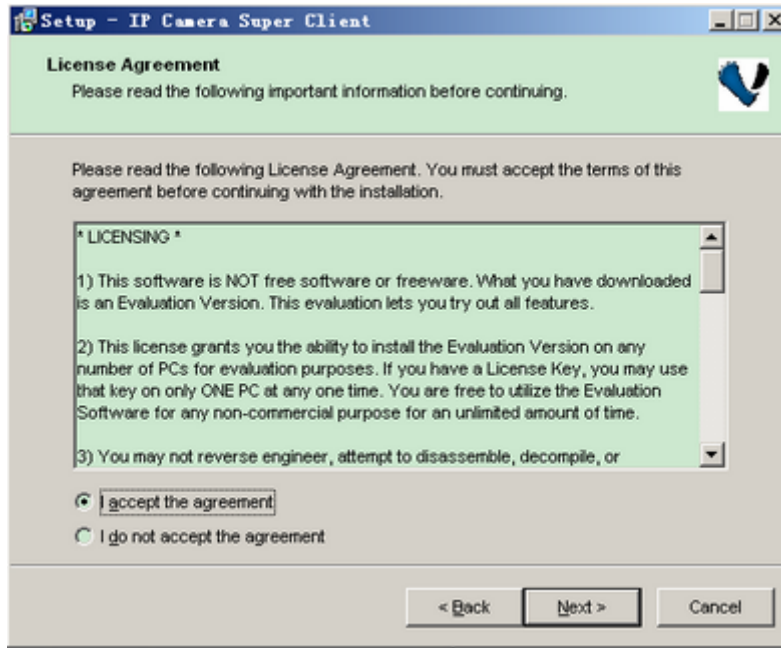
### **Function List:**

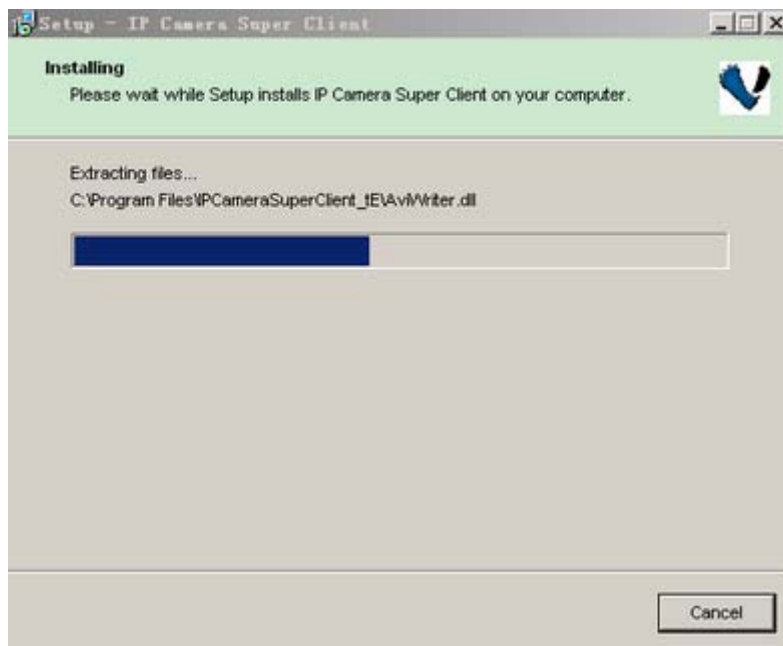
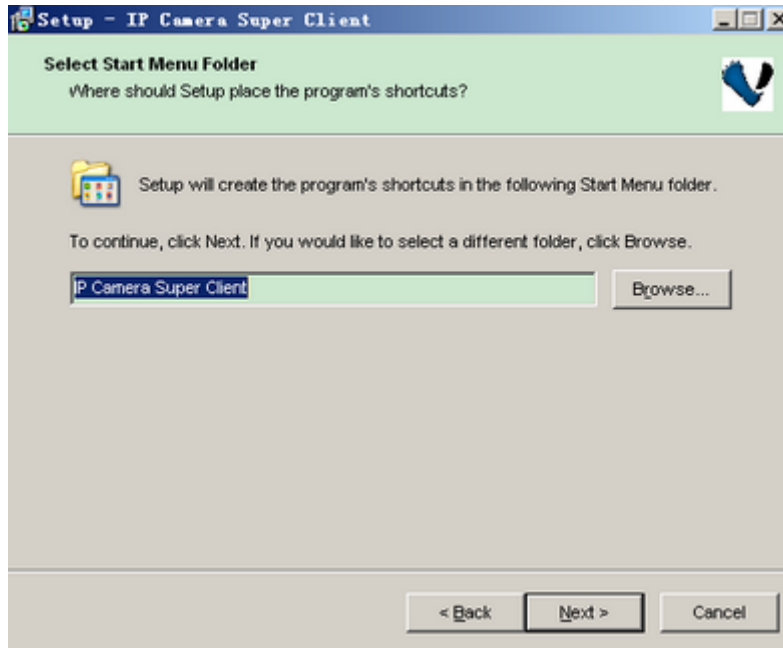
- 1.Support at most 81-video monitoring in one area;
- 2.Support always, schedule and alarm record, alarm snapshot;
- 3.Support multiple language.Chinese, Chinese(Traditional),English,Spanish,French, Japanese are available.
- 4.Support inquiry and browse of alarm records as well as operation records;
- 5.Support play and playback video saved on the current PC;
- 6.Support alarming of motion detection;
- 7.Support paging manually or automatically

## LESSON 2: Installation

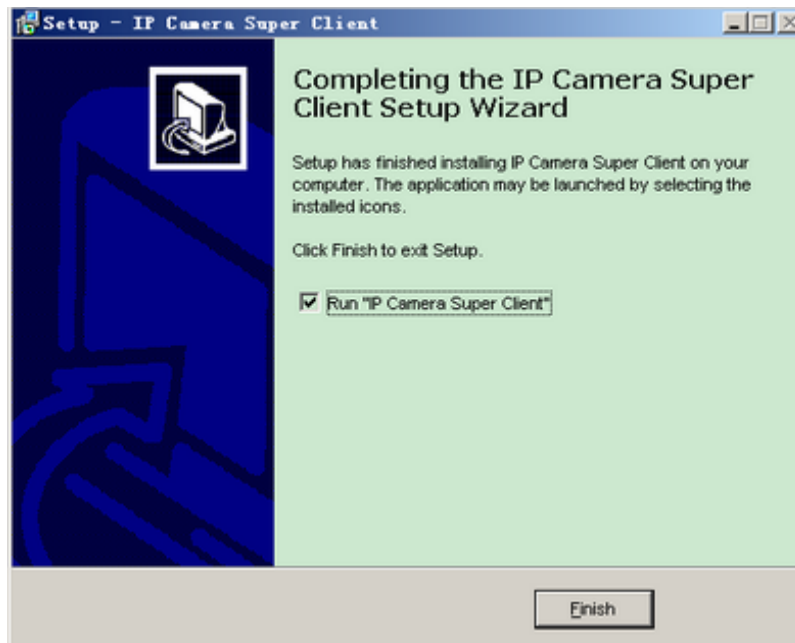
### 2.1 The procedure of installation



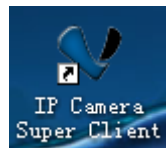




**Notice:** If pop out some notifications when installing, choose "Allow" option.

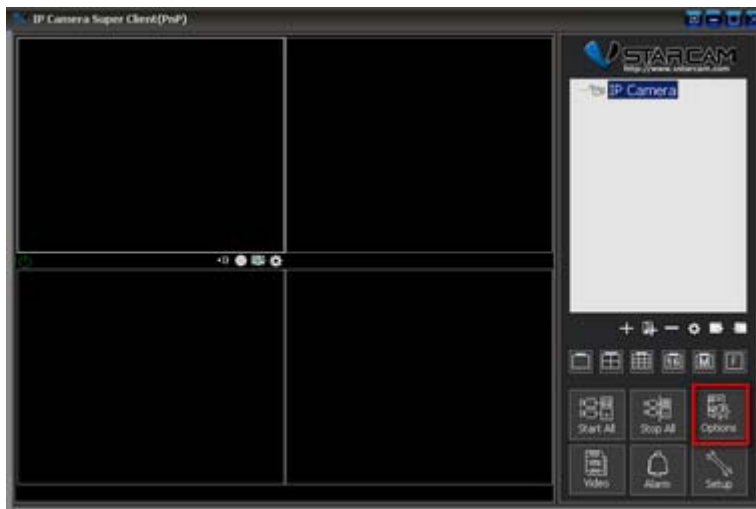


When finish installation, there is an icon displayed on the desktop.



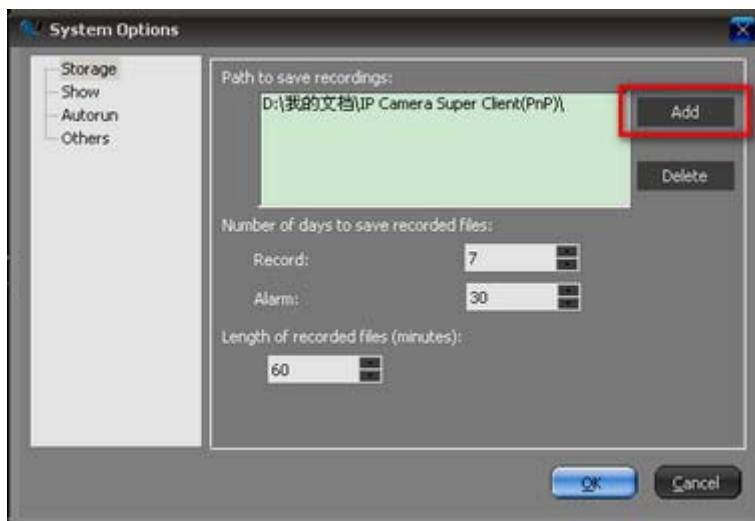
## 2.2 Setting path to save recordings

1. To set saving path, press "Options" button



## 2. To add or delete a path.

You can add multiple paths which will display in the "Path to save recordings" list. When space in one path is fully used, then IP-Camera Super Client will automatically use the next space displayed in the list.



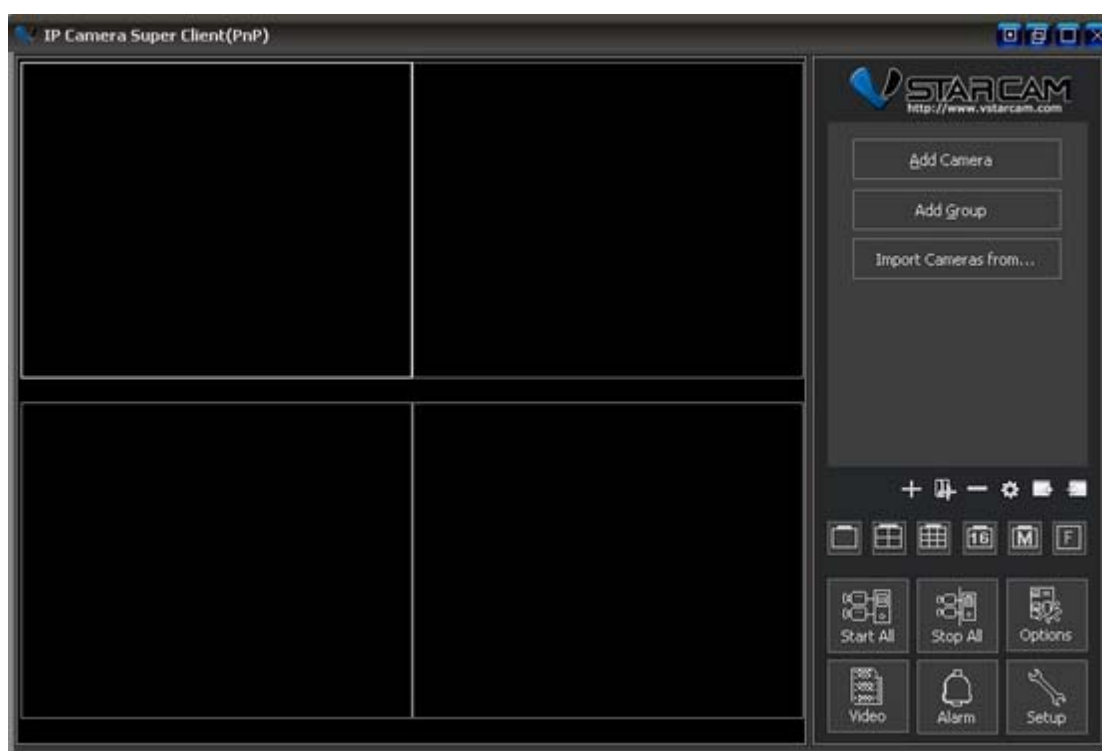


### 2.3 To make the IP-Camera Super Client autorun

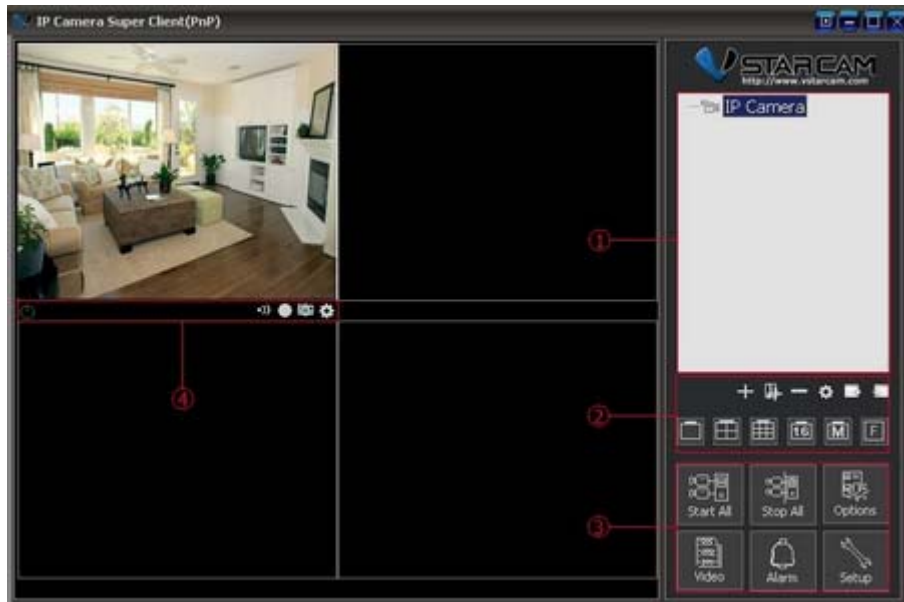


## LESSON 3: Introduction of main interface

### 3.1 The Origin interface



## 3.2 The main menus



### ① Cameras List

**IP-Camera tree-structure list:** support multiple level tree-structure list. Right click IP-Camera group, from the pop up menu, you can choose to connect this group of IP-Cameras or disconnect them. Right click a specific IP-Camera, then you can make some unique settings to a specific IP-Camera. Double click a specific IP-Camera, can connect this IP-Camera.

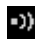



### ② Function Area

**Screen display Control:** you can choose one video shown on a screen or 4,9,16,25,64,81 videos shown on a screen. Full screen is also support. If the number of IP-Cameras is greater than 81, you can use page button to page up or page down. You can also choose to automatically page up and down.

### ③ Global Control

Connect, disconnect all IP-Cameras, management of videos, alarm record, system setting and other function.

### ④ Running status and control menu

-  Alarming information and settings;
-  Recording information and settings;
-  Snapshot manually;
-  Camera settings;

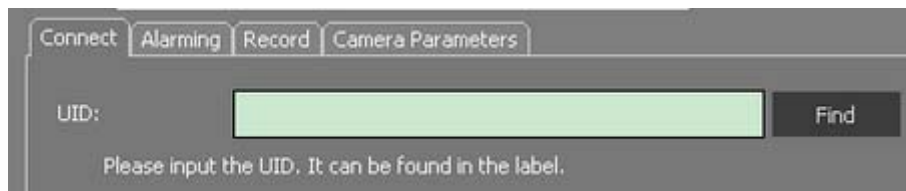
## LESSON 4: Instruction Guide

### 4.1 Add a new Camera

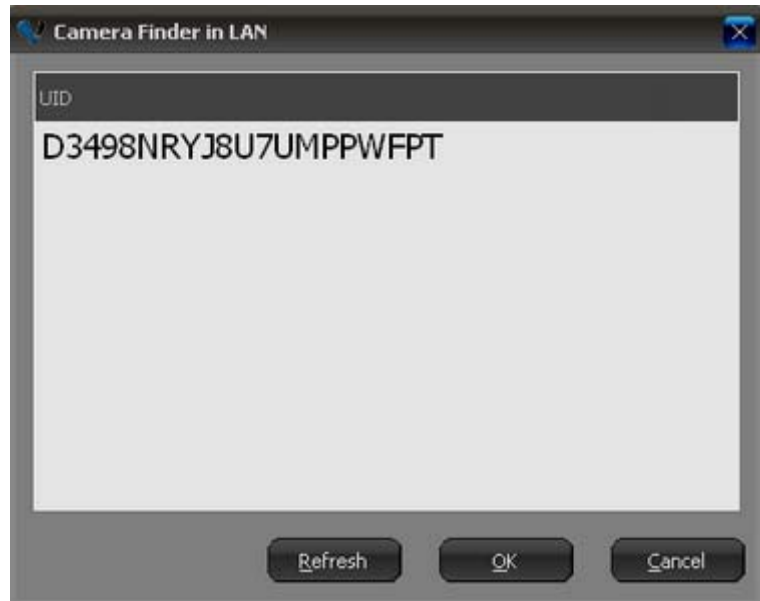
1. Press "Add Camera" on the right side of the Origin interface.



2. Then press "Find" button;



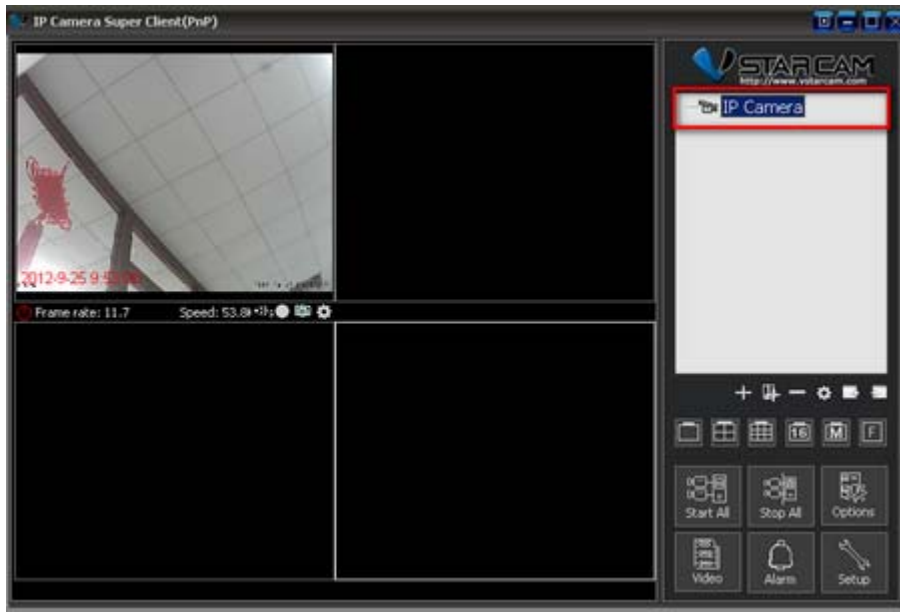
3. To find the online camera on Local area network;



4. Choose the UID you want to add,input password(The default password:888888.);

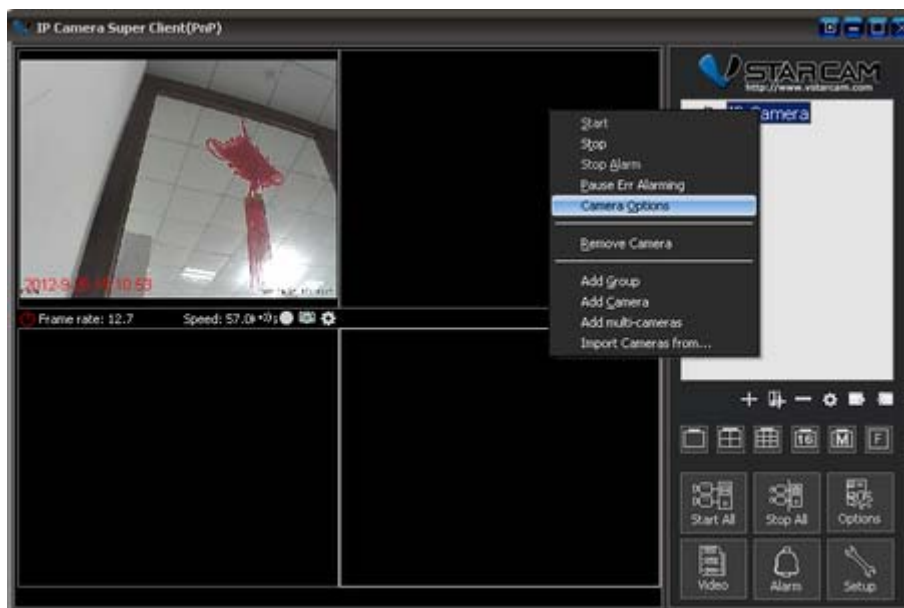


5. Double click IP-Camera on the list to view Live video:

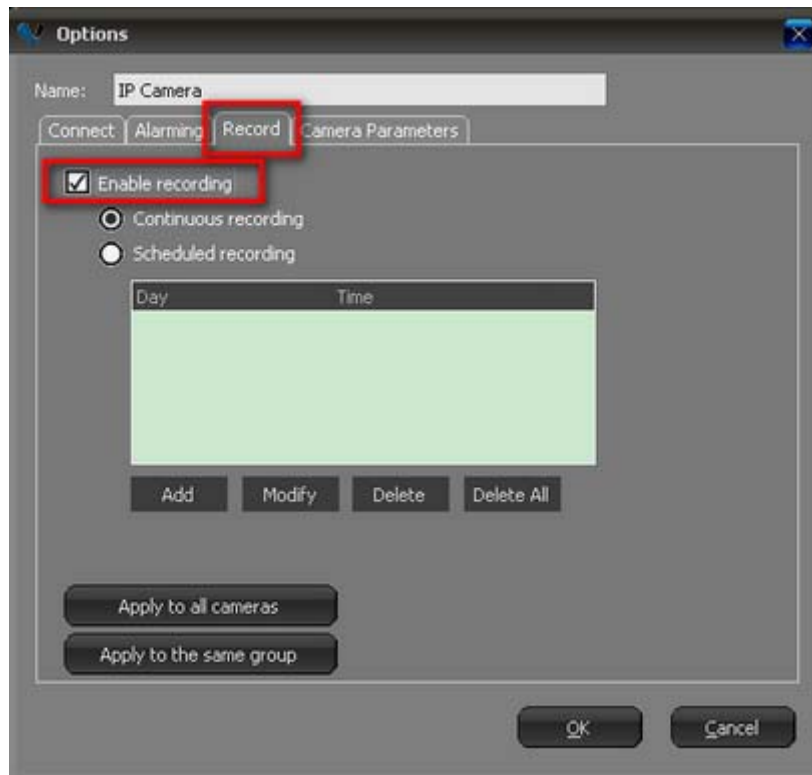


## 4.2 Settings of recording video

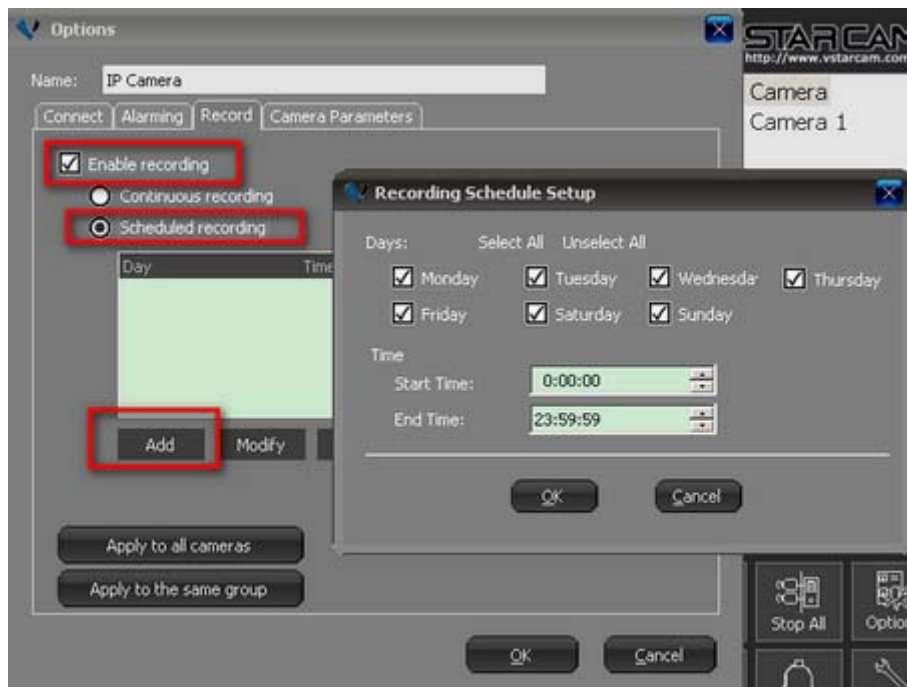
### 4.2.1 Settings on recording video



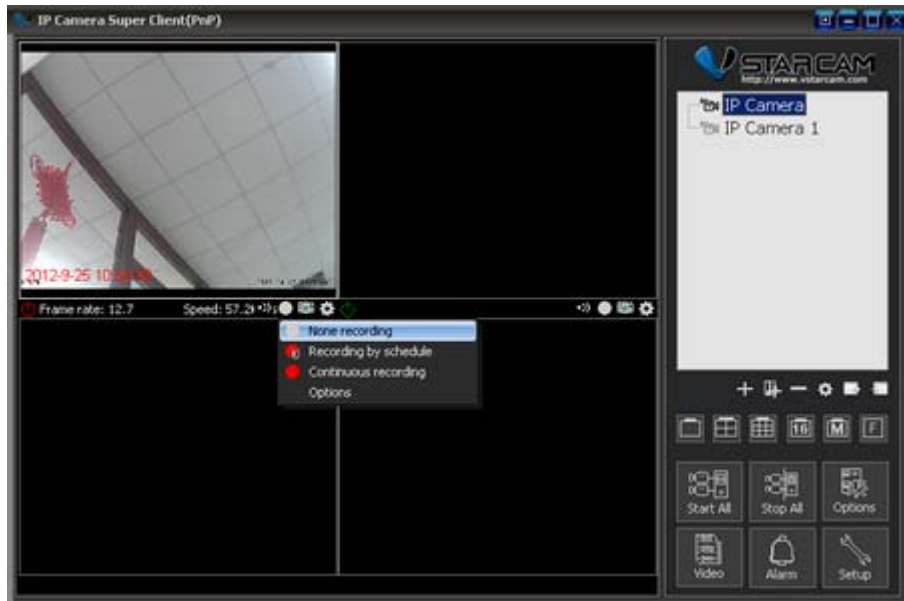
1. Press "Record" label, then check "Enable recording".The recording time can be set manually based on your own requirement.:



2. To set a schedule for recording videos;



Notice: There is a label below for quickly performing recording settings:

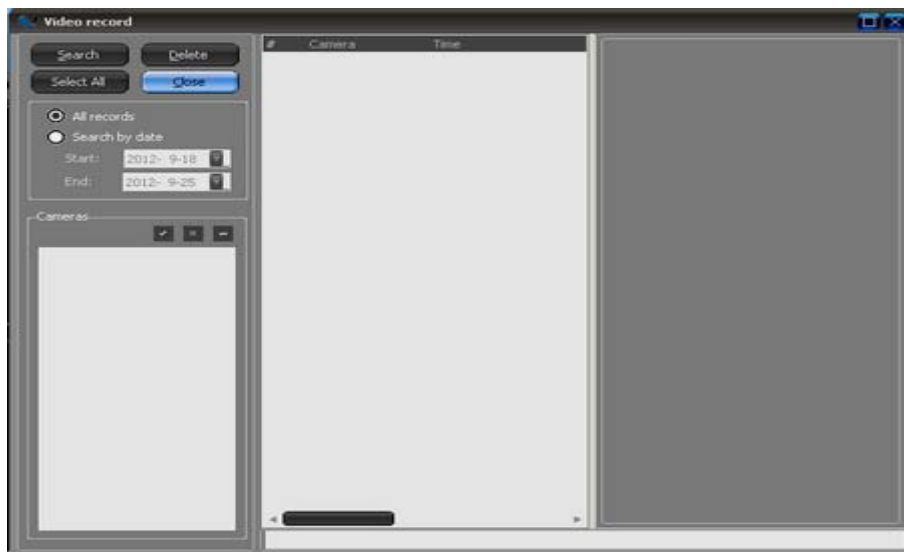


### 4.2.2 Check videos

1. Press the "Video" label on the main interface.



2. Can search all video record or search by date;

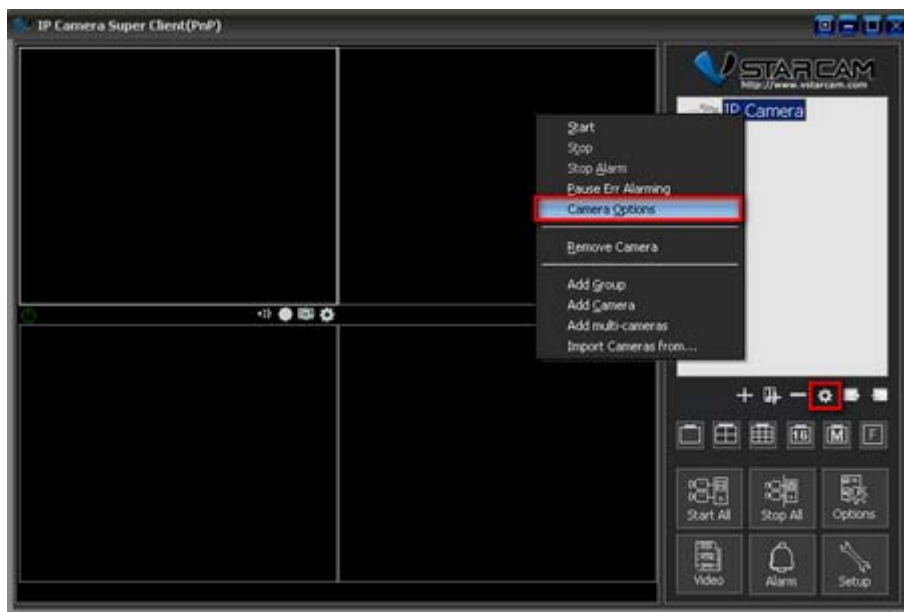




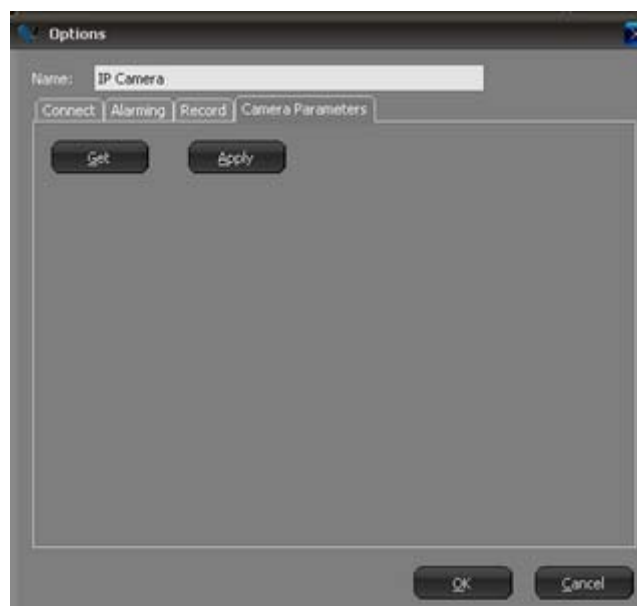
## 4.3 Alarming settings

### 4.3.1 Motion detection settings

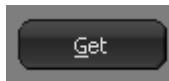
1. Press Camera label displayed on the Camera list, then from the pop out menu, choose "camera option".



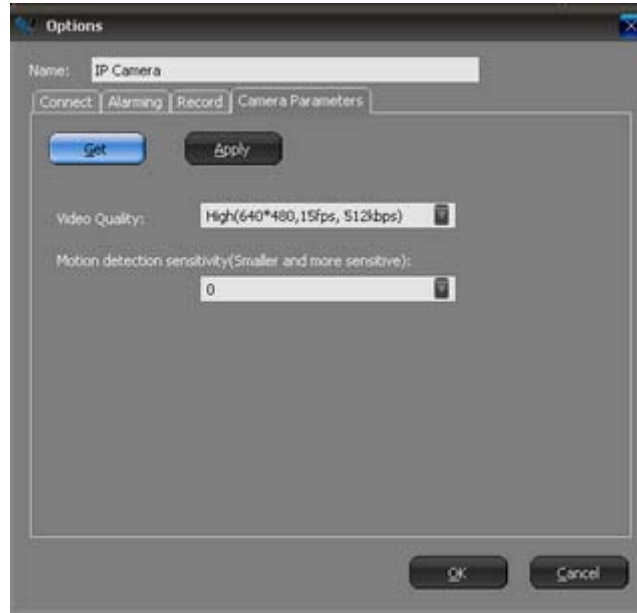
2. press "Camera parameters";



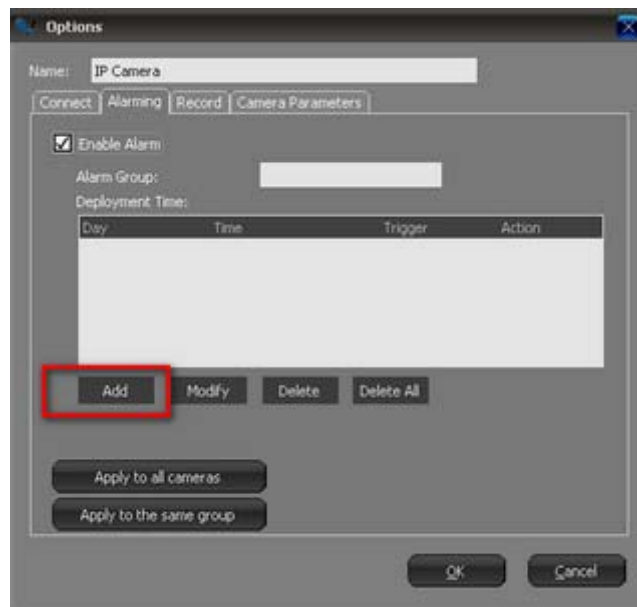
3. Press "Get" button:



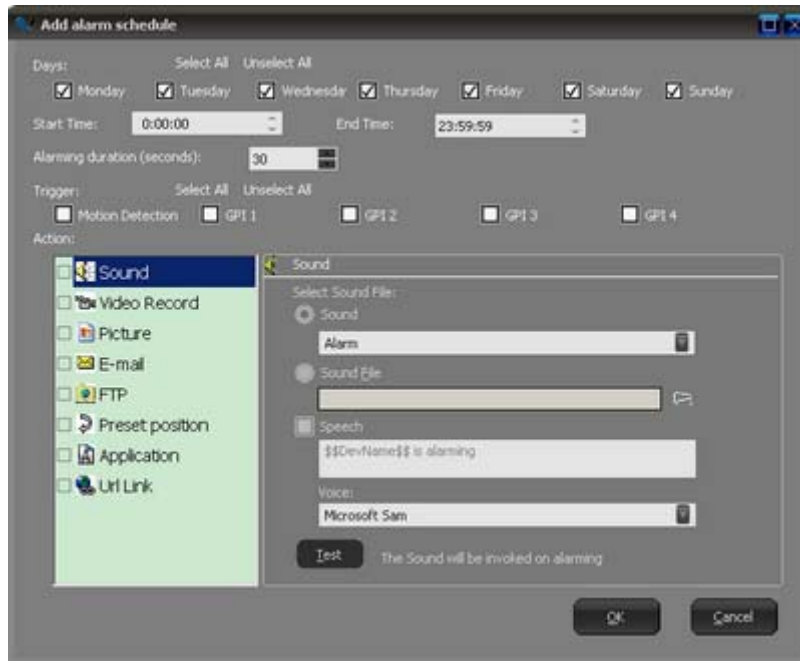
4. Choose the right motion detection sensitivity based on the current environment (Smaller and more sensitive) :



5. On the "Alarming" item, check "Enable Alarm"



6. Add a alarm schedule. Choose days and start time ,end time;check "Motion Detection" in trigger.When a trigger is happened, you can choose reaction in Action list(can check multiple items).

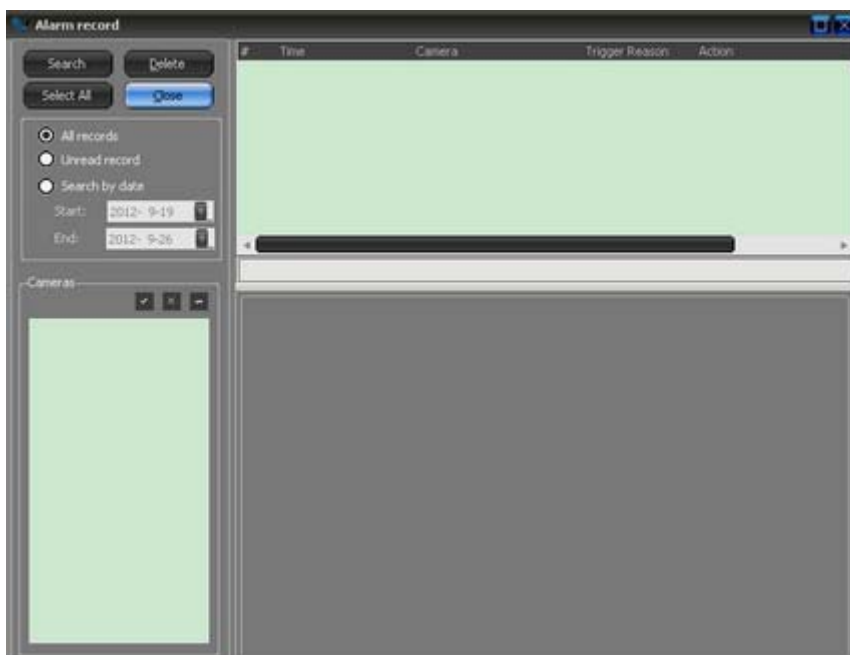


### 4.3.2 Check alarm records

1. Click "Alarm" on the main interface



2. You can search all records or search by date;



## 4.4 WIFI settings

1. Press "Camera option", then press "Set WiFi" label.



2. Press "Search signals" label



3. When Client finishes searching signals, then choose the right SSID from the display list;then press "Set", from the pop out dialog,input password for accessing WIFI.